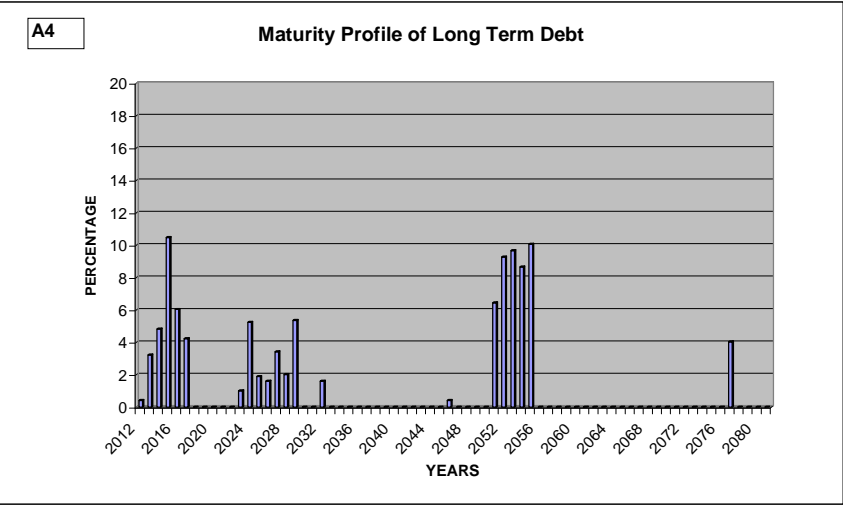
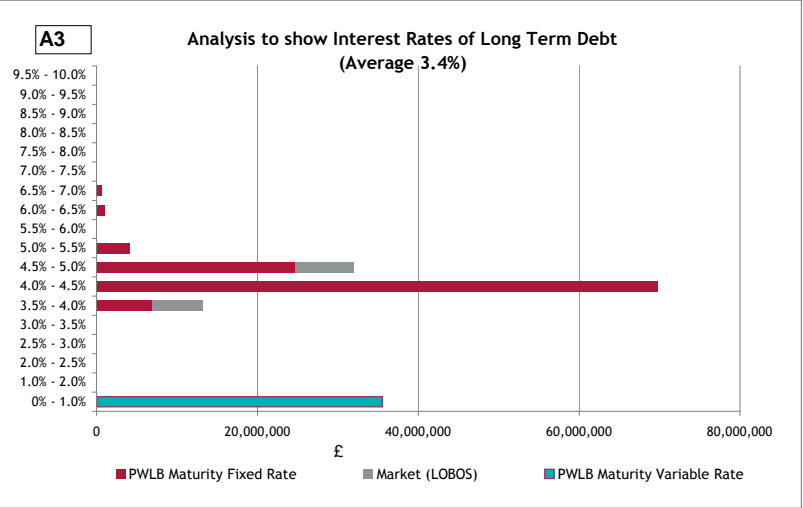
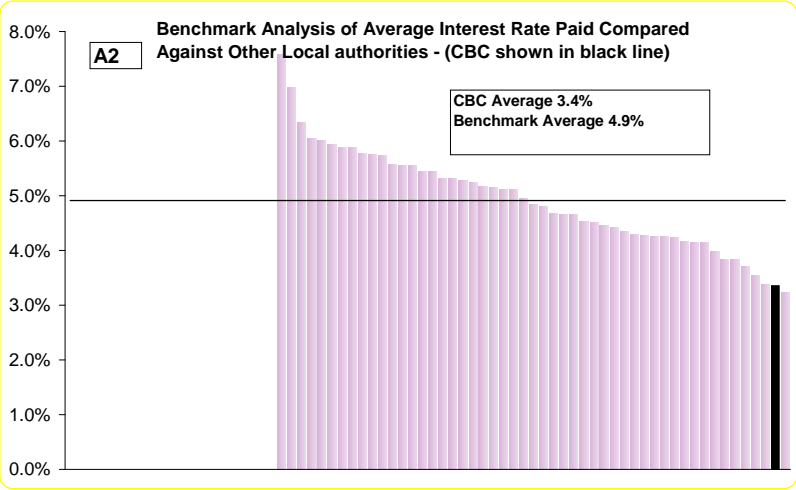
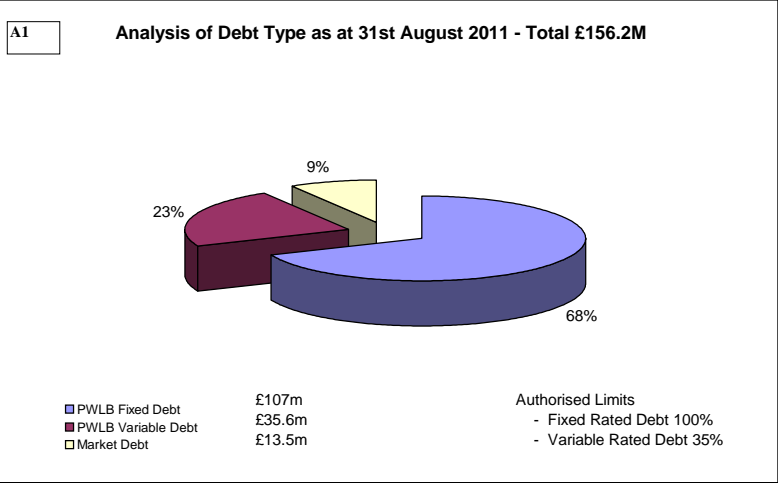


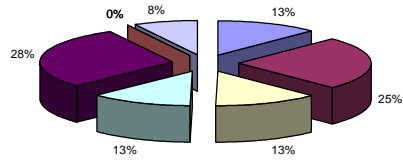
TREASURY MANAGEMENT PERFORMANCE DASHBOARD 30 SEPTEMBER 2011

SECTION A: DEBT INFORMATION



SECTION B: INVESTMENT INFORMATION

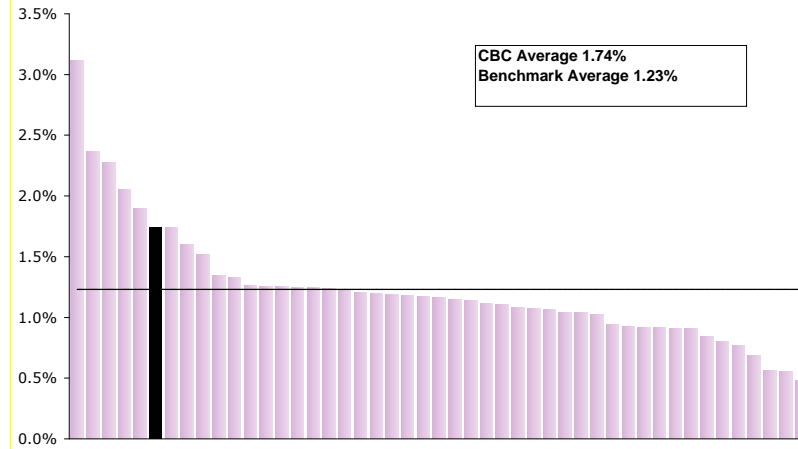
B1 Analysis of Investments as at 30th September 2011 - Total Investments £59.8M



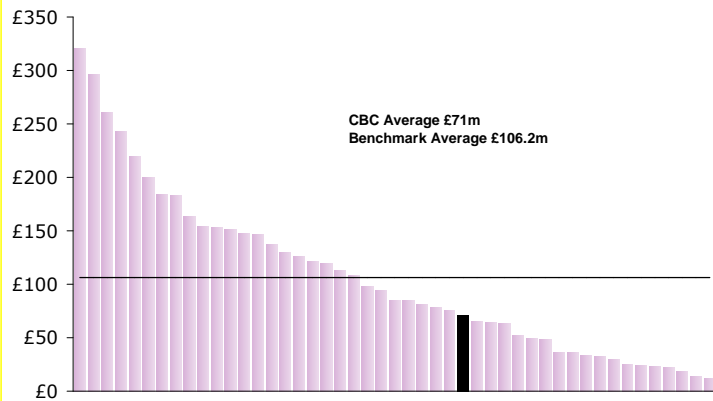
Barclays Bank	£7.5m
Lloyds TSB	£15m
Bank of Scotland	£7.5m
National Westminister Bank	£7.5m
National Westminister Bank	£17.6m
Santander	£6m
Goldman Sachs MMF	£0m
Lime fund	£4.7m

Authorised Maximum Limit
 - National Westminister £25m
 - Other Banks £15m
 - Lime Fund £10m
Money Market Fund 40%

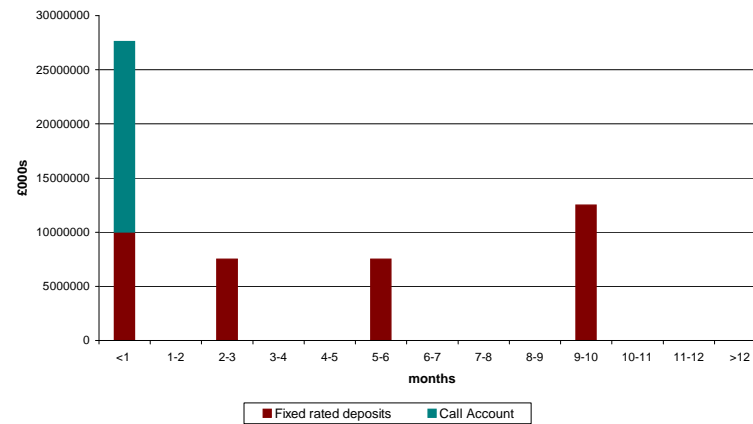
B2 Average interest Rate Received on Investments (CBC shown in black Line)



B3 Average Balance Invested £m (CBC shown as Black Line)

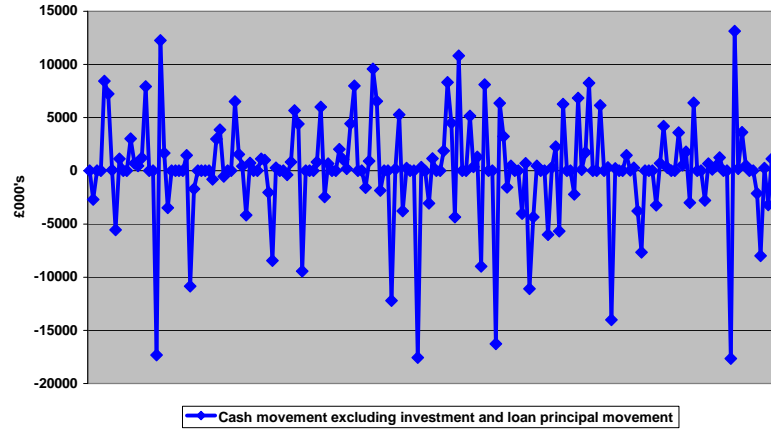


B4 Maturity Profile of internal Investments as at 30th September 2011

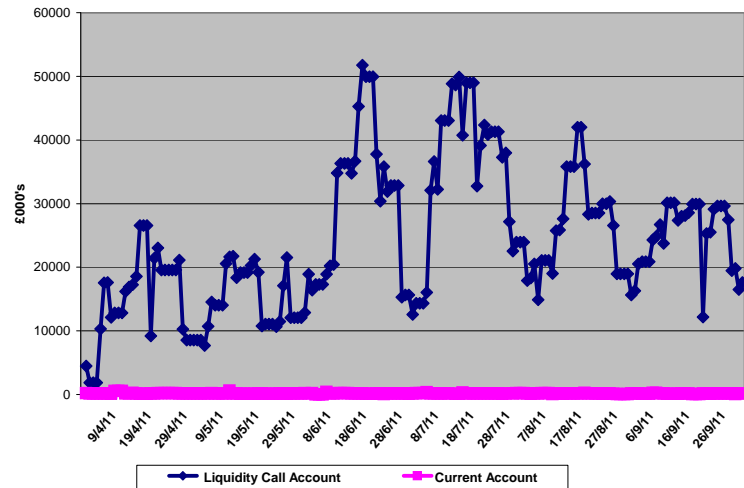


SECTION C: CASH MANAGEMENT

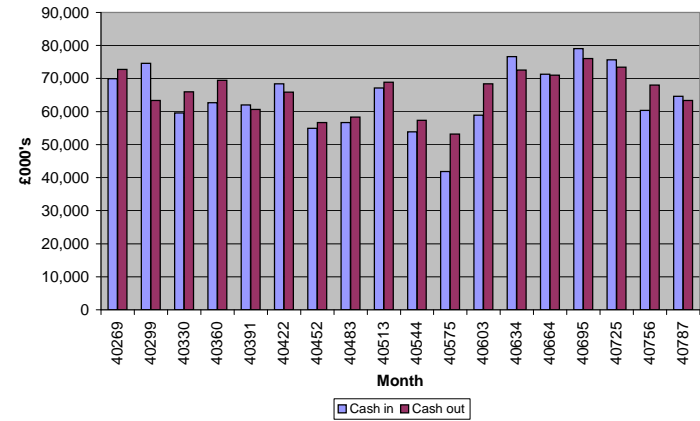
C1 Analysis of Daily Net Cash Movement between April -Sep 2011



Analysis of Amounts held in Liquid and in Current Accounts



C2 Monthly Cashflow Analysis (Excluding Investment & Loan Principal Movements)



Additional Treasury Information

Section A Debt

Authorised Boundary	£272m
Operational Boundary	£257m

Interest Payable

Budget	Actual	Variance
£6.8m	£6.1m	£0.7m

The maturity of the councils debt is profiled in order that no more than 20% matures in any one financial year

No Breaches of Prudential Indicators

SECTION B: INVESTMENT INFORMATION

Min credit rating of counterparties	A+
Max Limit with Natwest Society	£25m
Max Limit with other Banks /Building Society	£15m
Max Limit with Lime Fund	£10m
Max sum invested over 364 days	£25m

Interest Recievable

Budget	Actual	Variance
£1.3m	£1.04m	(£0.26m)

No Breaches of Prudential Indicators

MRP

Budget	Actual	Variance
£5.1m	£5.3m	(£0.2m)

SECTION C: CASH MANAGEMENT

Average amount held in Liquidity	£24.4m
Average amount held in Current Accounts	£0.15m